

## **No need for handbag cutters – make it freehand**

By The\_Dinosaur

Making a handbag freehand is not hard and it allows you to be a lot more creative, as well as save money.



### Requirements



Sugarpaste  
Flowerpaste  
Trex  
Edible Glue  
Gold petal dust  
Iso-Propyl Alcohol  
Tylo powder (Sugarcel/CMC/E466)  
Rolling out board  
Rolling pin  
Small/fine scissors

Artist Pallet knife  
PME Quilting tool  
Glue brush  
Mini ball tool  
Mini quilt embosser (Patchwork Cutters)  
Wilton No.7 piping nozzle

## Instructions

Knead a small quantity of tylo powder into the sugarpaste to create a modelling paste.  
(fig3)



Create the basic handbag shape. Leave to dry no less than 24 hours  
(fig 4)



Roll out a small amount of coloured flowerpaste  
(fig 5)



Lightly paint the top of the dried handbag with edible glue  
(fig 6)



Apply the piece of rolled out flowerpaste and trim to fit.  
(fig 7)



Mark two horizontal lines central on the top of the handbag for the zip.  
(fig 8)



Texture between these lines with the PME quilting tool - to complete the effect.  
(fig 9)



Roll out another piece of coloured flowerpaste and texture with the Patchwork cutter mini quit embosser.  
(fig 10)



Cut the textured flowerpaste into two pieces (each piece must be large enough to cover one side of the handbag). Apply a thin smear of edible glue to the sides of the handbag.

(fig 11)



Secure both pieces to the handbag foundation.

(fig 12)



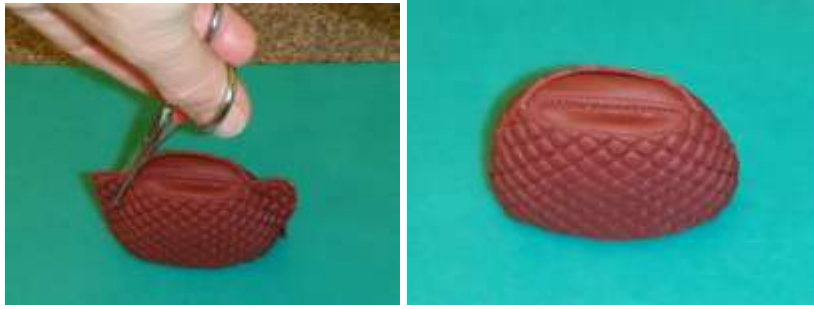
Using index finger and thumb pinch the excess paste (at the sides) together.

(fig 13)



Trim/remove the surplus flowerpaste using the fine scissors.

(fig 14, 15)



Rollout a long thin (1/8th inch) piece of flowerpaste. Flatten this sausage of flowerpaste (using the rolling pin).

(fig 16)



Paint a thin line of edible glue around the handbag (approx 1/4 of the depth).

(fig 17)



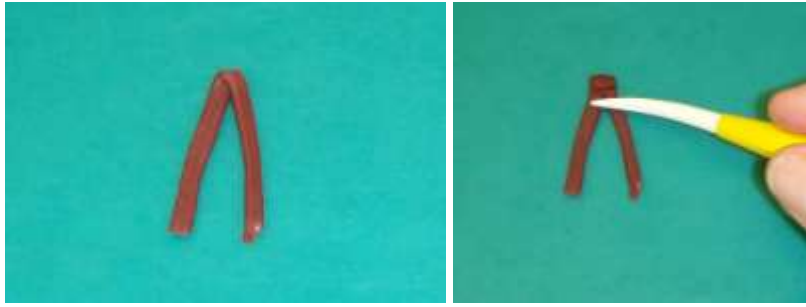
Starting at the centre front attach the sausage of flowerpaste to the handbag.

(fig 18)



Take a small strip of flowerpaste and fold in half, now fold the folded section over on it's self/ Mark with the veining tool (opposite end on the PME quilting tool) to create the illusion of a knot.

(fig 19, 20)



Fringe the bottom sections of the strip of flowerpaste.  
(fig 21)



Paint a spot of edible glue on the join and attach the tassel.  
(fig 22, 23)



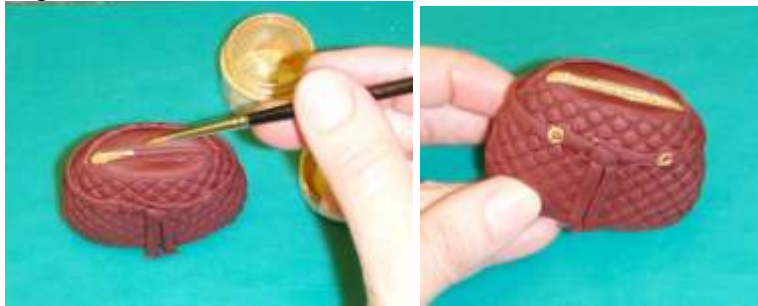
Using the tip of the no7 nozzle mark/emboss two 'o' on each side  
(fig 24)



Use the mini ball tool to make an indentation in the centre of each of the 'o'  
(fig 25)



Create a paint by adding a drop of IPA to the gold petal dust. Paint the zip and the four 'o' on the side of the handbag.  
(fig 26, 27)



Roll a small/tiny cone of flowerpaste and attach to the zip (to create the pull tie)  
(fig 28, 29)



Roll two thin sausages of flowerpaste (handles) and attach these to the handbag. Make sure you line the handles up with the 'o's'  
(fig 30)



There are loads of possibilities re styles. Here are a few examples of the basic foundation shapes.  
(fig 31)

